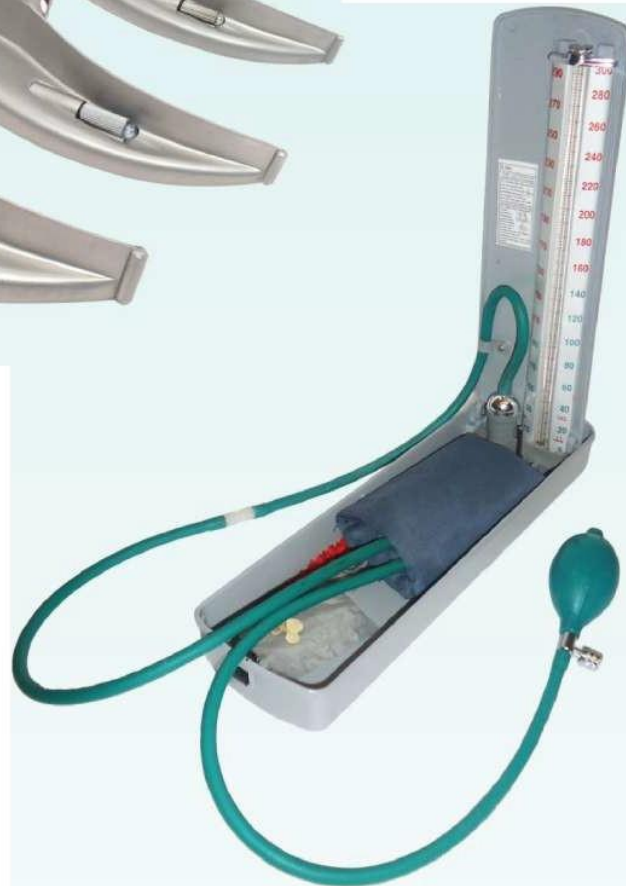


Diagnostic Equipments



Products Inside

- Sphygmomanometers
- Stethoscopes
- Thermometers
- Tongue Depressor
- Medical Knee Hammer
- Laryngoscopes
- Oscopes
- Nebulizers
- Glucometer
- Ophthalmology Instruments
- Pulse Oximeter
- Ecg Machine
- Fetal Doppler & Monitor
- Tuning Forks
- Nasal Speculum
- Patient Monitor

Diagnostic Equipments & Products

15000 - Sphygmomanometer Mercury

Specification:

- Sphygmomanometer (BP Apparatus)
- Mercurial, Desk Model.
- 300 mm/Hg, complete inflation system
- In an aluminium case.



Sphygmomanometer, Aneroid Type

Specification:

- Sphygmomanometer, Aneroid Type
- With dial reading upto 300mm/hg.
- Complete inflation system
- Supplied in a pouch



Item Code	Color
15001	Green
15004	Black

15002 - Digital Sphygmomanometer, Mercury Free

Specification:

- Pressure range: 0-300mmHg
- Accuracy : +- 3mmHg
- Cuff Scope: 22-23cm
- LCD instead of mercury
- No pollution, measurement accuracy
- Suitable for Hospital, Clinic & Home



Diagnostic Equipments & Products

15003 - Digital B.P Monitor

Measurement System :	Oscillometric method
Measurement Range :	Pressure; 0-280mm Hg Pulse; 40-180pulse/min
Accuracy:	Pressure; 3mmHg. Pulse ; 5%
Power source :	AASizex4
Battery Life:	Manganese batter; Approx. 300 times Alkaline battery; 1000 times
Rated Voltage :	DC6V- 3W



15056- Omron Automatic Blood Pressure Monitor

Specification :

- Easy, One-Touch Operation, Hypertension Indicator
- Body Movement Detection, Irregular Heartbeat Detection
- Memory for last reading and simultaneous display of systolic, diastolic and pulse rate

Package Contents:

- 1 Main Unit, 1 Arm Cuff (fits arm circumference 22-23 cm)
- English and Hindi Instruction Manual
- 4 "AA" Batteries



15141 - Sphygmomanometer Aneroid Table Top Model

Specification:

- Measurement Range: 0-300 mmHg
- Inflation method: Inflation and air release by manual
- Display: Square aneroid scale (0-300mmHg)
- Standard cuff size
- Cuff material: Deluxewith cotton
- Base color : Blue
- Self-zero function
- Specialize : Heavy base and save lots of space



Diagnostic Equipments & Products

15005 - Blood Pressure Monitor, Mercury (Stand Model)

Specification:

Mercurial Sphygmomanometer is traditional blood pressure measuring instruments with mercury locking facility, Range 0-300 mm Hg packed in light weight metal case.

- Easy to read with clear tube, Accurate reading.
- Emulsoid Bladder & Soft emulsoid Bulb
- Mercury lock facility.
- The Height of pole is adjustable (with range of 105cm to 146cm) Five wheels with brakes
- Measure Scope: 0-300mm Hg, Accuracy: 3mmHg
- Glass Tube: 3.5 to 4.0mm



Stethoscope Regular

Specification:

- Lightweight aluminium chestpiece external non-chill ring.

Item Code	Quality
15006	General
15007	Deluxe



15009 - Stethoscope Cardiology Aluminium

Specification:

- Stethoscope cardio, double side.
- Chestpiece with diaphragm on both sides.
- Suitable for both adult & Pediatric.
- Made of Aluminium.



Diagnostic Equipments & Products

15011 - IndoSurgicals Classic 11-SS Stethoscope

Specification :

- Machined stainless steel chest piece.
- Double sided chest piece technology.
- Diaphragm Diameter 4.5 cm (1.75 1.25 Inch approx)
- Small Diaphragm Diameter 3.2 cm {1.25 Inch approx)
- Reliable & High Acoustic Sensitivity offer an advantage to Health Care Professionals when listening to Heart, Lung and Blood Pressure Sounds.
- Spare diaphragm & soft ear tips provided absolutely free of cost.
- **Color: Black, Blue, Red, Grey, Green**
- 5 Years Warranty



15012 - Teaching Stethoscope (Double Tube)

Specification :

- This product is used for the auscultation human heart, organs, such as lung, etc.
- It can be used by two people in the same time.
- Usually we take it for teaching.
- This item applicable for two persons doing diagnostic proceedings simultaneously.



15131 - Dulcet Dual Head Stethoscope for Paediatric and Neonatal

Specification :

- **STAINLESS STEEL CONSTRUCTION:** Made of Stainless steel it is Acoustically Superior and durable.
- **CONTOURED HEAD SET:** Pre-angled headset is anatomically contoured for a precise fit and clear audibility.
- **REDUCED EXTERNAL SOUND:** The diaphragm is slightly down fitted in heavy chest piece and soft sealing ear tips reduces external sound.
- **SUITABLE FOR NEONATAL:** The smaller side of the chest piece is fitted with 2.5 cm diameter and it is suitable on neonatal.
- **SUITABLE FOR CHILD:** The larger side of the chest piece is fitted with 3.5 cm diameter and it is suitable on child.



Diagnostic Equipments & Products

15132 - Cardiology Stethoscope SS

Specification:

- Stain lessSteel chest piece.
- High acoustic sensitivity.
- Brass chrome plated screw on ring excellentfinish.
- P.V.C. 'Y' shaped tube.
- Anatomically correct headset and comfortably angled.



15134 - Silvery Stethoscope

Specification:

- Light weight alluminium sand anodized chest piece.
- High acoustic sensitivity.
- PVC 'U' shaped tube, Soft sealing eartips .
- Grey chrome plated 5mm headset comfortably angled.
- Grey chrome plated metal ring.
- Spare diaphragm & soft ear tips provided absolutely free of cost.
- **Color: Black, Blue, Red, Grey**
- 2 Years Warranty



15030 - Stethoscope Foetal, Pinard Foetal, Aluminium Anodized

Item Code	Type
15030A	Pinard foetal, aluminium anodized
15030B	Pinard foetal, plastic



Diagnostic Equipments & Products

Disposable Fibre Optic Laryngoscope Set , Macintosh with LED Lamp

Specification:

- Disposable Laryngoscope LED fitted handle for fibre optic system With PRIMA: Disposable Fibre Optic Laryngoscope Blade (Aluminium Heel, SS Spatula), Macintosh Type



Item Code	No . of Blades	Blade Size
15053A	3	0, 1 & 2
15053B	3	1, 2 & 3
15053C	4	1, 2, 3 & 4
15053D	4	0, 1, 2 & 3

Disposable Fibre Optic Laryngoscope Set , Miller with LED Lamp

Specification:

- Disposable Laryngoscope LED fitted handle for fibre optic system With PRIMA: Disposable Fibre Optic Laryngoscope Blade (Aluminium Heel, SS Spatula), Miller Type



Item Code	N o. of Blades	Blade Size
15054A	3	0, 1 & 2
15054B	3	1, 2 & 3

15055 - Otoscope Deluxe

Specification:

- IndoSurgicals Delux Otoscope features standard illumination with a 2.5V vacuum bulb, three-times magnification and a rotating lens.
- Halogen Light provide cool light with no reflections or obstructions.
- 3 reusable ear specula - 2.5mm, 3.5mm and 4.0mm.
- Wide-angle viewing lens allows for instrumentation under magnification.



Diagnostic Equipments & Products

15060 - Nebulizer - Piston Compressor Type

Specification :

- Power : AC230V, 50 HZ/60Hz
- Medication Capacity: 5ml
- Sound Level : around 60 dBA
- Maximum Medication Capacity: 13ml
- Average Nebulization Rate: Min. 0.2ml/min.
- Compressor Pressure Range: 30 - 36 psi (210 to 250 Kpa/2.1 to 2.5 bar)
- Operating Pressure Range: 8 - 16 psi (50 to 100 Kpa/0.5 to 1.0 bar)
- Liter Flow Range: 6 - 8 lpm
- Standard accessories: Dependable compressor, Nebulizer, Air Tube, Angled Mouth Piece, 5 Air Filters, Connecting Tube



15061 - Ultrasonic Nebulizer -Portable

Specification :

- Handy design and light in weight with rechargeable battery pack
- Handy Design : With built-in detachable rechargeable battery pack, compact and light-weight
- Easy to use: Uses water as ultrasonic conducting medium, no gel is required.
- Silent Operation : Thanks to the ultrasonic vibration technology 3-Speed nebulization
- Rate control : Provides optimal treatment for all kinds of medication with different density.
- Built-in timer : Automatically shuts off after 10 minutes use.
- Power : AC220-240V, 50/60Hz
- Nebulization rate : 3-speed adjustable
- Auto shut-off timer: Approx. 10 min



Diagnostic Equipments & Products

15063 - Blood Glucose Monitoring System

Specification:

- Easy, Fast and Accurate way for self monitoring of Blood Glucose.
- 3 µl Blood Required.
- Accurate and Easy to Use Virtually Painless.
- Fast Results (9Seconds).
- Sample Volume : 3µl
- Measuring Time : 9 Seconds
- Battery Life : 1000 Tests
- Memory: 180 Tests Results
- Calibration : Auto Calibration by Code Card
- Test Range : 30 - 750 mg/dL



15065 - Accu-chek Active Glucometer Monitor With 10 Test Strips

Specification:

- Features and Benefits Accu Chek Active Blood Sugar Glucose Monitor +10 Strips Testing in record time With a testing time of about 5 seconds
- Accu-Chek Active is one of the fastest blood glucose monitors available.
- Easy to operate No need to press buttons when you carry out the test.
- Easy-to-use data analysis function



Accu-chek Active Test Strips

- Blood sample size: 1-2 micro litre; if sample applied at the center of test pad
- Sample type: Capillary, Venous, Arterial, Neonatal
- Compatibility : Only with AC Active meter
- Storage: +2 C to 30 C
- Strip Stability: 11-18 months

Item Code	Quantity
15066	50 Test Strips
15067	100 Test Strips



Diagnostic Equipments & Products

15070 - Trial Frame

Specification :

- The cells are spaced to accommodate reduced aperture lenses only.
- Accommodate up to 8 pieces 38mm trial lenses and it permits smooth & easy manipulation of Bridge & P.O.
- Fully adjustable temple length and nose rest.
- Easily changeable cylinder axis
- Wide range of PD adjustments from 48mm , 80mm.



15072 - Schiottz Tonometer

Specification :

- Instruments according to Prof.Schiottz for measuring eye pressure.
- Needs almost no servicing, ensures smooth operations for years.
- Highly accurate Weights to give correct measures.
- Jewel operated, complete with three weights.



15133 - Pulse Oximeter Finger Tip

Specification:

- SPO2 , Pulse Rate, Pleth waveform
- Simple Operation for fast & easy spot-checks
- Dual-colour OLEO display (blue and yellow)
- Wider viewing angle, clear and comfortable
- Six modes of display direction adjustable by pressing the button shortly
- Four levels adjustable brightness
- Automatic power-off without signal within 5 seconds
- Display format can be saved after power off
- Battery status display and low battery voltage indication



Diagnostic Equipments & Products

15146- Fingert ip Pulse Oximeter

Specification:

- Two parameters: SpO2, Pulse Rate
- SpO2 Waveform
- Beep alarm
- COLOR OLEO display, four direction adjustable

Technical Parameters

- Integrated with SpO2 probe and processing display module.
- Application : Hospital, home, community medical treatment, sports healthcare etc.
- Can measure SpO2 and pulse rate accurately.
- SpO2 and pulse rate display, pulse rate waveform and bar graph display.
- Battery voltage low indication.
- Four directions and six modes.
- Screen brightness adjustable.
- Low power consumption, shut off automatically when no signal.
- Small volume 57 x 31 x 32 mm, light weight, convenient to carry.
- Display mode: 0.96" double colour OLEO display.
- Screen resolution : 1% for SpO2, 1 bpm for pulse rate.
- Accuracy: +-2% (70% - 100%), unspecified (<70%) for SpO2, +-2bpm or +-2% (select larger) for pulse rate.
- Power supply : 1.5 V (AM Size) alkaline batteries can work 20 hours continually.
- Interference resistance capacity against ambient light and measurement performance at low perfusion.



15142 - Handheld Pulse Oximeter

Specification:

- Displays SpO2 and pulse waveforms
- Plethysmograph displayed for improved performance
- Color TFT Display with Multi-Directional Views
- Brightness control
- Low power consumption with low battery alarm on display
- Adult SpO2 sensor Included
- Optional sensors for neonatal and pediatric applications
- Data analysis software, Programmable alarms
- AC charger or from USB port
- Programmable display, Pulse sound indication
- Flash memory with 24 data read back
- Great product for hospitals, health care providers, physicians, nurse practitioners



Diagnostic Equipments & Products

15143 - Handheld Pulse Oximeter

Specification :

- Small in volume, light in weight and convenient in carrying.
- Operation of the product is simple, low power consumption.
- Operation menu for the function setting.
- SpO2 value display.
- Pulse rate value display, bar graph display.
- Pulse waveform display.
- Screen brightness can be changed.
- Pulse rate sound indication.
- With review function. With clock function.
- With measured data overruns limits and low-voltage alarm function.
- Battery capacity indication.
- Low-voltage indication: Low-voltage indication appears before working abnormally which is due to low-voltage and with alarm function.
- With SpO2 value and pulse rate value of storage, the storage data can be uploaded to computers.
- Real-time data can be transmitted to computers.
- Connected with an external oximeter probe.



15144 - Tabletop Pulse Oximeter

Specification :

- Measurement of SpO2, Measuring Range: 0-100
- Accuracy : When the SpO2 measure range is 70%-100%, the permission of absolute error is $\pm 2\%$
- Below 70% unspecified
- Measurement of pulse rate
- Measure range: 30bpm-250bpm
- Accuracy: ± 2 bpm or $\pm 2\%$ (select larger)
- Measurement of PI, Measure range : 0-20%
- When the PI measure range is 1% - 20% the permission of absolute error is $\pm 0.2\%$
- When the PI measure range is 0% - 0.9% the permission of absolute error is $\pm 0.2\%$
- Resolution: SpO2: 1% Pulse rate : 1bpm PI : 0.1o/o
- Measurement performance in weak filling condition
- SpO2 and pulse rate value can be shown correctly when pulse filling ratio is 0.4%, SpO2 error is $\pm 4\%$, Pulse rate error is ± 2 bpm or $\pm 2\%$ (select larger), Resistance to surrounding light
- The deviation between the value measured in the condition of man-made light or indoor natural light that of darkroom is less than 1%
- Operating Voltage : Internal power supply: 3.6 V DC - 4.2 V DC
- Exterior alternating current supply: 100-240 V AC, 50/60Hz



Diagnostic Equipments & Products

15145 - Pulse Oximeter with NIBP

Features

- 2.8" height brightness TFT LCD display.
- High brightness LED display of NIBP, SpO2 and Pulse rate.
- Memory : Built - in flash memory.
- Upto 2000 groups NIBP data storage and SpO2 data upto 48 hours.
- Visual and audio alarms, adjustable.
- Audio volume adjustable.
- Built-in rechargeable Li-Polimer



NIBP

- Method: Oscillometry
- Method: Manual/ auto/ continuous
- Measurement range: 25-260mmHg
- Resolution: 1mmHg
- NIBP Accuracy: +-Smm Hg
- Alarm : SYS/DIA/MAP

SpO2

- Measurnig Range: 0%-100%
- Resolution: 1%
- Accuracy: +-2% (70%-100%), 0%-69% unspecifici ed.
- Alarm range : 0-100%

Pulse Rate

- Measurement range: 10-270mmHg
- Resolution : 1bpm
- Accuracy : +-2bpm or +-2 (select larger)
- Dimension & Weight : 190L x 160W x 244H mm - 1.5 Kg.

15135 - CMS 100G ECG Machine Single Channel

Specification:

- 2.7" STN disp lay shows the working status and ECG w aveform. Check the waveform before printing to save record paper.
- Output system: High-resolution thermal-array(8dots/mm), it needs not be adjusted. Recording frequency Response: Up to 1SOHz.
- The device can record exact single ECG waveform and remark . The mark includes: lead sign, sensitivity, paper speed, filter state.
- Under automatic mode, just press the button once, it starts record procedure, which can enhance your work efficiency.



Diagnostic Equipments & Products

- The language of operation interface include Chinese, English, French, Italian, Turkish, Spanish, German Kazakhstan, Russian. Print language include English, French, Italian, Turkish, Spanish , German Kazakhstan, Russian.
- Display with 2.8" (320x240) color TFT LCD and red and yellow highlight LED.
- The keyboard 's control is whole touch type, it's convenient to operate.
- Unique Flash memory, storage for up to 2000 NIBP data and 78000 SpO2 data.
- Classification: Class I, CF defibrillator proof.
- Power supply: AC/DC, rechargeable lithium battery inside
- This instrument can record 160 pieces of ECG waveform and 4hours, standby for 10 hours continually under the best DC state.
- The figure of whole device is elegancy and gliding
- According to protection degree of deleterious fluid, this device is IPX0.
- Digital signal processor for effective inhibition of AC, EMG and OFT, receive the better ECG waveform.
- According to the working mode class, this device belongs to continuous operation equipment

Item Code	Type
15155	CMS 300G ECG Machine Three Channel
15156	CMS 600G ECG Machine Six Channel
15157	CMS 1200G ECG Machine Twelve Channel

15136 - Desktop Fetal Doppler

Specification:

- Ultrasonic Frequency: 1.0 MHz, 2.5 MHz or 2.0 MHz
- LCD size: 3.5" (74.50 mm)
- FHR display range : 30bpm-240bpm
- Dimension : 230(L)x148(W)x100(H)mm
- Continuous work time : > 8 hours.



Features

- 3.5" colour LCD display.
- Ultrasonic wave mode: Continuous wave or Pulse wave.
- Built-in speaker.
- Automatic switch-off.
- Waterproof interchangeable probe.
- Various FHR display mode: Graph Mode, Large Number & Manual Mode

Diagnostic Equipments & Products

15137 - Pocket Fetal Doppler

Specification:

- Streamline and portable design, compact and light
- Large LCD display with backlight, can be used in any illumination conditions
- Ergonomic design easy to use. Automatic power-off
- High sensitivity interchangeable probe
- Support 2MHz, 3MHz, 4MHz, 8MHz water proof probes
- Built-in speaker and sound output interface
- Real-time FHR display average, FHR display and manual calculation
- Battery status indicator and low power indicator



15138 - Pocket Fetal Doppler

Features:

- Easy to use, LCD display, Built-in speaker
- Blue backlight, Audio output
- Automatic switch-off. Real-time and average
- Battery energy indication
- Sound alarm function when FHR is out of the normal range

Specifications:

- Ultrasonic Frequency: 2.5 MHz
- Dimension: 100(L)* 30(W)* 135(H)mm. Weight 0.5Kg
- Continuous work time: 8 hours
- Configuration: 3.6V rechargeable battery, Charger, Manual



15139 - Fetal Monitor

Specifications:

- 7" wide TFT color LCD display.
- Upto 150 patients data saving.
- Fetal heart sound play and record in PC.
- Rotating screen.
- Multiple language support.
- Built - in quick guide (LCD Type).
- Waterproof probe.



Diagnostic Equipments & Products

15140 - Fetal Monitor

Specifications:

- Light dexterous appearance, tops horizontally and walls can be hoisted.
- 8.0" screen color LCD display, rotatable screen to 60 degree.
- Display of the patient data and curve clearly.
- FUR 120BPM-160 BPM normal range label.
- Manual records fetal movement.
- Sound and color alarm for high and low fetal heart rate.
- Continuous 24 Hours real-time monitoring function.
- Continuous 12 Hours patient curve and data storage,
- With picture freeze function. OPTIONAL english interface.
- Single, twins monitoring OPTIONAL. 9 crystal board band pulsed wave transducer.
- Extra-long life, high-resolution built-in thermal recorder.
- Built-in communication port, can be connected with central monitoring system.



Tuning Fork

Specifications:

- A tuning fork is a metal instrument with a handle and two prongs or tines. Tuning forks, will vibrate at a set frequency to produce a musical tone when struck. The vibrations produced can be used to assess a person's ability to hear various sound frequencies.
- A vibrating tuning fork held next to the ear or placed against the skull will stimulate the inner ear to vibrate, and can help determine if there is hearing loss.

15200

128 Hz

15201

256 Hz

15202

512 Hz



15400 - Nasal Speculum Set of 3

Specifications:

- The IndoSurgicals Thudicum Nasal Speculum designed to open and expand the nasal cavity. This is a reusable instrument, manufactured from medical grade surgical stainless steel. It is supplied in set of 3 size.



Diagnostic Equipments & Products



15149 - Multi Parameter Patient Monitor



15150 - Multi Parameter Patient Monitor



15151 - Patient Monitor



15152 - Patient Monitor



15153 - Multi Parameter Patient Monitor



15154 - Multi Parameter Patient Monitor

Hospital Furniture



Products Inside

- Hospital Beds
- Examination / Delivery Tables
- Hospital Ward Furniture
- Hospital Trolleys
- Stretchers
- Wheelchairs
- Blood Donor Chairs

Hospital Furniture

10000 - ICU Bed, Electric with ABS Panel and ABS Safety Rails

Specification:

- Frame work made of Rectangular M.S Tube
- ABS Mattress platform in four sections
- Back Rest, Knee Rest, TB/RTB and Hi-Lo Positions obtained by electric actuator operator by hand remote system
- ABS molded head and foot bows
- ABS track away safety side Railing
- Telescopic IV Rod with Two Locations
- Bed Mounted on 125 mm Dia Castor with central Braking system
- Overall Size: 210 L x 90W x 50 -70Hcms
- Nurse control panel. Chair position. CPR system.
- Finish: Epoxy Powder Coated



10001 - ICU Bed, Electric with ABS Panel and ABS Safety Rails

Specification:

- Frame work made of Rectangular M.S Tube
- MS Mattress platform in four sections
- Back Rest, Knee Rest, TB/RTB and Hi-Lo Positions obtained by electric actuator operator by hand remote system
- ABS molded head and foot bows
- ABS track away safety side Railing
- Telescopic IV Rod with Two Locations
- Bed Mounted on 125 mm Dia Castor with two braking wheels.
- Overall Size: 210 L x 90W x 50 -70Hcms
- Finish: Epoxy Powder Coated



10002 - ICU Bed, Electric with ABS Panel and Aluminium Safety Rails

Specification:

- Framework made of rectangular M.S. tube perforated CRC sheet top in four sections
- Back rest, knee rest, TB/RTB and hi-lo positions obtained by electric actuator operate by hand remote system
- ABS molded head and foot bows
- Aluminium collapsible safety side railings
- Telescopic IV rod with four locations
- Bed mounted on 125 mm diameter castor-two with brakes
- Overall size: 210 (L) x 90 (W) x 60-80 (H) cm
- Finish: Epoxy powder coated



Hospital Furniture

10003 - ICU Bed with SS Laminated Panel & SS Side Rail

Specification:

- Overall approx. size: 2250 mm L X 1015mm W X 6251820mm H.
- Four separate screw for backrest & knee rest.
- Back section X-Ray translucent and three sections uniformly dimple ribbed perforated CR MS sheet top
- Hydraulic Height adjustment.
- Stainless steel tubular collapsible side rails.
- Rubber buffer on all corners.
- Stainless steel & laminated removable headboard & footboards.
- Stainless Steel telescopic IV rod & 4 flush IV locations
- O2 cylinder cage & X-Ray cassette holder in the back board. 125 mm dia heavy wheels, two with brakes.
- Pretreated & epoxy powder coated.



10004 - ICU Bed with ABS Panel and ABS Safety Rails

Specification:

- Frame work made of Rectangular M.S Tube
- 4 Section top made of perforated M.S Sheet
- Backrest, knee rest and Hi-Lo Positions maneuvered by separate screw from foot end
- ABS molded . Head & foot panels
- ABS tuck away safety side railing
- Telescopic IV Rod with two locations
- Bed mounted on four 125 mm dia castor, two with braking system.
- Overall Size 210lx90Wx60-80Hcms
- Finish Epoxy powder coated



10005 - ICU Bed Mechanical with ABS Panel and Safety Rails

Specification:

- Frame work made of rectangular M.S. tube 4 section top made of perforated M.S. sheet
- Backrest, knee rest, TB/RTB and hi-lo positions maneuvered by separate screw from foot end
- ABS molded Head & foot bows
- Collapsible / swing away safety side railing
- Telescopic IV rod with four locations
- Bed mounted on 125 mm diameter castor two with brakes
- Overall Size: 21 (L) x 90 (W) x 60-80 (H) cm
- Finish: Epoxy powder coated.



Hospital Furniture

10006 - ICU Bed Mechanical with Laminated SS Panel

Specification:

- Frame work made of rectangular M.S. tube 4 section top made of perforated M.S. sheet
- Backrest, knee rest, TB/RTB and hi-lo position maneuvered by separate screw from foot end S.S panel Head & foot bows
- Up and down safety side railing
- Telescopic IV rod with four locations
- Bed mounted on 125 mm diameter castor two with brakes
- Overall Size: 21 (L) x 90 (W) x 60 -80 (H) cm
- Finish: Epoxy powder



10007 - Fowler Bed. Electric with ABS Panel and ABS Safety Rails

Specification:

- Electric Fowler Bed (2 function)
- Overall approx Size: 2030mm x 900mm x 600 mm
- Frame work made of rectangular M.S. tubes
- Perforated CRC Sheet top in four sections
- Backrest & Kneerest Positions obtained by electric actuator operator
- ABS Moulded Head & Foot Bows
- ABS Moulded Safety siderailings
- Telescopic I.V. Rod with 4 locations
- Bed Mounted on 100mm Deluxe Castors, two with brakes
- Pre Treated and Epoxy powder Coated.



10008 - Fowler Bed Mechanical with ABS Panel and ABS Safety Rails

Specification:

- Hospital Fowler Beds made of high quality materials, components and accessories.
- Hospital Fowler Beds has four section sheet metal top.
- Hospital Fowler Beds with adjustable back section and knee-rest.
- Manually operated crank system for various positions.
- Standard: ABS Railing, ABS Panel.
- High quality castors.
- Standard dimension: bed frame 2030mm L x 900 mm W x 600 mm H (approx).
- Pre-treated and powder coated.



Hospital Furniture

10009 - Fowler Bed with ABS Panel

Specification:

- Hospital Fowler Beds made of high quality materials, components and accessories.
- Hospital Fowler Beds has four section sheet metal top.
- Hospital Fowler Beds with adjustable back section and knee-rest.
- Manually operated crank system for various positions.
- High quality castors.
- Standard dimension: bed frame 2030mm L x 900 mm W x 600 mm H (approx).
- Pre-treated and powder coated.



10010 - Fowler Bed with SS Laminated Panel

Specification :

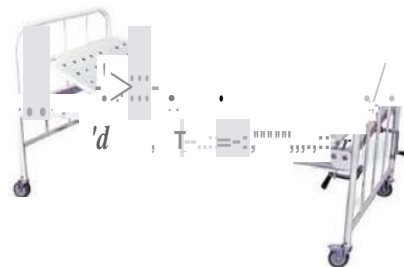
- Fowler Bed made of high quality materials, components and accessories.
- Four section sheet metal top.
- Fowler Bed with adjustable back section and knee-rest.
- Manually operated crank system for various positions.
- Standard: SS panels, sheet metal platform .
- High quality castors.
- Standard dimension: bed frame 2030mm L x 900 mm W x 600 mm H (approx).
- Pre-treated and powder coated Fowler Bed.



10011 - Fowler Bed General

Specification:

- Fowler Beds made of high quality materials, components and accessories
- Four section sheet metal top
- Fowler Beds with adjustable back section and knee-rest
- High quality castors
- Standard dimension: Bed frame 2030 mm (L) x 900 mm (W) x 600 mm (H) (approx)
- Manually operated crank system for various positions
- Standard: P/C Frame, sheet metal platform
- Pre-treated and powder coated Fowler Beds.



Hospital Furniture

10012 - Semi Fowler Bed , Electric with ABS Panel and SS Safety Rails

Specification:

- Frame Work made of rectangular M.S. tubes
- Overall approx size: 1900mm x 900mm x 600mm
- Perforated CRC sheet top in two sections
- Backrest positions obtained by electric actuator operator by hand remote system.
- Telescopic IV Rod with Four Locations
- S.S collapsible safety side railings
- Bed mounted on 100mm deluxe castors, two with brakes
- ABS moulded head and foot bows
- Pre Treated & Epoxy Powder Coated Finish.



10013 - Semi Fowler Bed with ABS Panel

Specification:

- Size: 206 L x 91 W x 61 H Cms.
- Backrest adjustable on crank mechanism
- Stainlesssteel handle for backrest adjustment
- Uniformly perforated two section mild steel CRCA sheet top
- Framework made from mild steel ERW rectangular tubes
- Four locations on bed frame for telescopic IV pole
- "H" type legsfitted with rubber shoes
- Pretreated and powder coated finish
- Supplied in knock down condition



10014 - Semi Fowler Bed with SS Laminated Panel

Specification:

- Size: 206 L x 91 W x 61 H Cms.
- Frame Work of specially designed CRC Rectangular heavy Tubes.
- Two Section Top of Uniformly Perforated CRC Sheets.
- Backrest maneuvered by screw, at Legend. , S.S. Bows are of equal height fitted with Laminated Panel.
- Two Location Saline Hole.
- Pretreated and Epoxy Powder Coated.



Hospital Furniture

10015 - Semi Fowler Bed General

Specification:

- Frame work of strong & precise steel tubes mounted on 10 cm diameter Swiveling castors
- Having two section top of perforated CRCA sheet duly machine press bent
- Backrest section maneuvered by screws
- Tubular head and foot bows of unequal height with vertical tube supports
- Provisions for four saline locations
- Size: 206 (L) x 90 (W) x 60 (H) cm
- Finish: Epoxy Powder Coated coated.



10016 - Hospital Plain Bed

Specification :

- Frame work made of rectangular square M.S. tube
- Top made of M.S sheet
- Tubular head & foot bows of unequal height
- Location for four I.V. rod
- Overall size: 198 (L) x 90 (W) x 60 (H) cm
- Finish: Epoxy powder coated.



10017 - Hospital Bed Wire Mesh

Specification :

- Frame work made of rectangular/ square M.S. tube
- Top made of welded wire mesh
- Tubular head & foot bows of unequal height
- Location for Four I. V Rod
- Overall Size: 203 (L) x 90 (W) x 60 (H) cm
- Finish: Epoxy powder coated.



Hospital Furniture

10108 - Gynae Examination Table

Specification:

- Overall Size: 180 (L) x 60 (W) x 46Hcms.
- Frame work made of Rectangular/ Square M.S. Tube
- Back rest section adjustable on Ratchet/ Lever
- Legs fitted with PVC Stumps
- 5cm foam cushioned top covered with rexine with perineal cut
- Adjustable lithotomy poles with straps
- Finish: Epoxy powder coated.



10109 - Gynecological Table

Specification:

- Overall Size: 180L x 60W x 46H ems
- Framework made of MS Steel
- Back rest section adjustable on Ratchet/ Lever
- Legs fitted with PVC Stumps
- 5 ems foam cushioned top covered with rexine
- Adjustable lithotomy poles with straps
- Finish : Epoxy Powder Coated



10110- Examination Bed Gynaecological

Specification:

- Gynaecological Examination bed Electric
- Overall Size L 1830mm x W 870mm x Ht. 520- 1010mm
- Two section Upholster cushion top
- Head low/up position manually with the help of ratchet
- Sliding foot end
- Adjustable Height position through hand remote as per convenience
- 'U' notch with drainage tray
- 100mm goods quality castors, two with brakes
- Lithotomy padded cushion rods for leg support
- Epoxy powder coated base



Hospital Furniture

10111 - Examination Table Electric

Specification:

- Height adjustable from 560-1000mm
- Scissor action provides vertical lift
- Mains powered electric actuator (240 volt electrical supply)
- Hand switch operation
- Head section offers angle adjustment by a pneumatic pump
- Paper roll holder fitted to foot end
- 125mm swivel braking castors
- Maximum load 190kg



10112 - Examination Couch Electric

Specification :

- Breathing hole option
- Swing Away siderails fitted as standard
- Variable height
- Electric hand-set control
- Adjustable head/back rest section
- 4 brake/swivel castors, for ease of manoeuvrability and safety
- Comfortable Upholster waterproof foam surface
- Accessories: couch end (dual use - push steer bar and patient safety feature), IV pole and complete lithotomy set (brackets, straps & pole)



10113 - Examination Couch 3 Section

Specification :

- Height adjustment by electromotive drive
- The electric motor is controlled by 1 foot switch (possible option: Hand switch)
- Head part step less up- (+50°) and downwards (-45°) adjustable by gas spring.
- Length head part: 450 mm
- Middle part fixed. Length: 1.290 mm
- Foot part step less adjustable from downwards vertical position (-90°) to upwards position (+28°) by gas spring.
- Length foot part: 450 mm
- Upholstery base: Laminated wood.
- Length min.: 1.790 mm, Length max. 2.190 mm

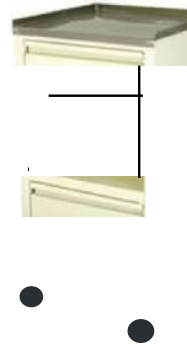


Hospital Furniture

10204 - Bedside Locker Deluxe

Specification:

- Made of high quality sheet metal
- Stainless steel top with raised edges on three sides
- Provided with one storage cabinet and single drawer under the top and space for keeping utilities
- Overall size approx. : 40L x 40W x 82H ems.
- Mounted on four 5 ems. Dia. castors
- Pre-treated and epoxy powder coated finish



10205 - Bedside Locker General

Specification:

- Made of high quality sheet metal
- Stainlesssteel top
- Machine pressed sheet box with door of heavy gauge
- Overall size approx. : 40L x 40W x 82H ems.
- Mounted on rubber stumps
- Pre-treated and epoxy powder coated finish



10206 - Bedside Cabinet

Specification:

- Hospital bedside cabinet made of high quality sheet metal
- Stainlesssteel top with raised edges on three sides
- Hospital bedside lockers Provided with two drawers and one storage cabinet
- Overall size approx. : SOL x 45W x 82H ems.
- Mounted on four 5 ems. Dia. castors
- Pre-treated and epoxy powder coated finish



Hospital Furniture

10207 - Over Bed Table Height Adjustable

Specification:

- Laminate table top approx. 80cm (L) x 38cm (W)
- Approx. 40mm x 80mm outer support steel tube
- Approx. 40mm square steel tubing legs
- Fingertip pressure height adjustable: 76cm - 106cm
- Mounted on four 5 ems. Dia. castors
- Pre-treated and epoxy powder coated finish



10208 - Over Bed Table (Adjustable) by Gear Handle

Specification :

- Table base and frame work made of steel tubes mounted on four 5 ems. Dia. castors
- Overall size of laminated top : 30" x 16"W adjustable by gear handle.
- Pre-treated and epoxy powder coated
- Knockdown construction



10209 - Over Bed Table Manual

Specification:

- Table base and frame work made of steel tubes mounted on four 5 ems. Dia. castors
- Overall size of laminated top : 30" x 16"W adjustable by side knob
- Pre-treated and epoxy powder coated
- Knockdown construction



Hospital Furniture

10213 - Bedside Screen 4 Panels

Specification:

- Overall approx. size: 1680mm(H)x 2450mm(W)
- MS tubular construction in four section
- Mounted on 50 mm dia. castors
- Supplied with hooks and spring with curtain
- Finish: Pre treated and Epoxy powder coated



Foot Stool

Specification :

- Tubular MS steel frame work mounted on rubber shoes
- Steps with rubber mat, surrounded by aluminum angle
- Finish: Epoxy powder coated

Item Code	Size Approx.
10214	460 (L) x 510 (W) x 230 (H) mm
10215	460 (L) x 510 (W) x 460 (H) mm

10214
Single

10215
Double



Hospital Wash Basin Stand

Specification:

- Five legs base mounted on 5 cm dia. castore
- Pre-treated and Epoxy powder coated
- Also available in S.S. pipe & rings

Item Code	Size Approx.
10216	Single (35 cms S.S. basin)
10217	Double (35 cms S.S. basin)

10216

10217



Hospital Furniture

10218 - Revolving Patient Stool S.S. Top

Specification:

- M.S. tubular frame with four legs fitted with PVC stumps
- Foot rings supports
- S.S. top, adjustable heights from 18 to 27 through screw mechanism
- Pre treated and epoxy powder coated



10219 - Patient Revolving Stool

Specification:

- M.S. tubular frame with SS top
- Height adjustable with screw mechanism on 5 castors
- Knockdown construction



10220 - Revolving Stool Height Adjustable

Specification:

- Patient Stool I Revolving with Cushion Top
- Epoxy powder coated framework.
- Plastic base with 5 wheels
- Height adjustable using pneumatic gas spring



Hospital Furniture

10306 - Ambulance Stretcher

Specification:

- The stretcher for ambulance car designed three -step according to the height of ambulance carriage bottom board.
- It is made of high-strength aluminum alloy materials.
- Use-safety and easy for sterilization and clean.
- The bed surface is made of foamed cushion, the material is waterproof.
- The backrest is adjustable which makes the wounded feel comfortable.
- The stretcher with safety lock, it must be locked up when transport the patients, and opened out when get on the ambulance.
- The mechanical folding legs are controlled by the handles on both sides.
- Only one person can send the patient (with this trolley) to the ambulance.
- The size of castor approx. :125mm
- Size (LxWxH): High Position approx.: 190x54x90cm
- Low Position approx. : 190x54x25cm.
- Self-weight: 40 kg
- Load Bearing: 181 kg.



Folding Stretcher

Specification:

- Stretcher pipe made of Aluminium
- With carry bag
- Load Bearing capacity 90-100 Kgs

Item Code	Type
10307	Stretcher 2 Folds
10307	Stretcher 4 Folds



Hospital Furniture

10401 - Folding Wheelchair

Specification:

- 24" mag wheel with P.U tubeless tire
- 8" castor with P.U tubeless tires
- Load capacity: 100kg
- Both side hand operated plated brakes
- P.P molded foot rest with chrome plated adjustable leg rest
- Frame: M.S chrome plated
- Arm rest: Fixed with soft PU top
- Weight: 13.4kg
- Seat & back rest: Cloth folding washable
- Seat width : 16" & 18"



10402 - Wheelchair Non Folding

Specification:

- Raw material and have tubular frame work.
- Wheelchair are fitted with sufficient cushioning washable seat and supported with durable & comfortable footrests.
- Provided with self propelling hoops and hand operated brakes.



10501 - Blood Donor Couch

Specification:

- Blood sampling chair with fixed height approx. 670 mm
- Comfortable upholstery with good density width approx. 550
- Mild Steel epoxy powder coated finish
- Adjusting back rest via self locking mechanism system
- Adjusting leg rest via a self locking mechanism system
- Equipped with 2 blood test splints, every position adjustable by serrated blocks system
- Load capacity: 150kg



Surgical Instruments



Allis Tissue Forceps



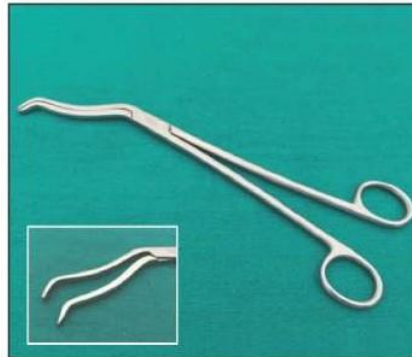
Artery Forceps



Babcock Forceps



Bozeman Needle Holders



Cheatele Forceps



Green Armytage Forceps



Hartmann Alligator Ear Forceps



Kocher's Forceps



Magill Forceps



Mosquito Artery Forceps

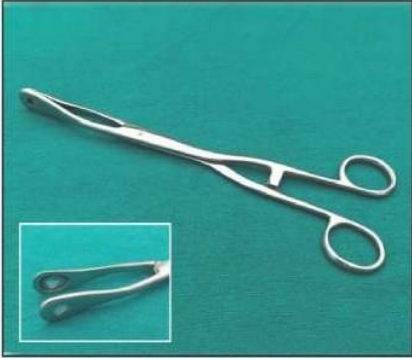


Needle Holding Forceps

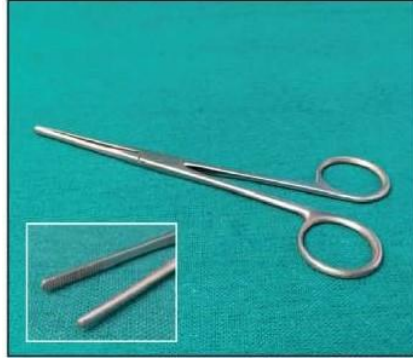


Ovum Forceps

Surgical Instruments



Piles Holding Forceps



Sinus Forceps



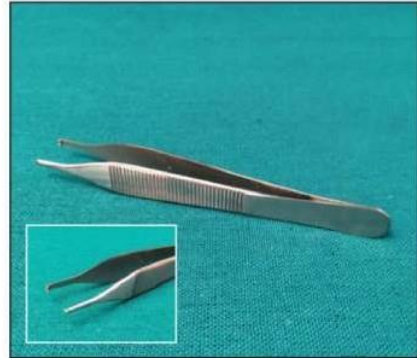
Sponge Holding Forceps



Tenaculum Forceps



Vulsellum Forceps



Adson Forceps



Dental Tweezers



Dissecting Forceps



Tonsil Dissecting Forceps



Cuticle Scissors



Dressing Scissors



Episiotomy Scissors

Surgical Instruments



Heymann Nasal Scissors



Lister Bandage Scissors



Mayo Scissors



Metzenbaum Scissors



Suture Scissors



Trauma Shears



Umbilical Scissors



Vannas Spring Scissors



B.P. Handle (Scalpel Handle)

Hospital Scrubs & Linens



Products Inside

- Doctor's Coat, Gown & Scrub Suit
- Disposable Cap
- Disposable Face Mask
- Disposable Gloves
- Disposable Shoe & Boot Covers
- Hospital Aprons
- Medical Drape Sheets
- Hospital Bed Sheets
- Pillow Cover
- Operation Theatre Towels
- Patient Identification Wristbands

Hospital Scrubs & Linens

85018 - Doctor's Lab Coat (Cotton)

Specification:

- Premium quality unisex medical lab coat from IndoSurgicals collection.
- Professional look with high comfort.
- Very soft fabric yet very durable, and it is designed with functional details that will help you perform your job well.
- Elegant notched lapel collar buttons at the front for easy closure.
- Two large patch pockets and a chest pocket.
- Size: XS, S, M, L, XL & XXL



85026 - Unisex Scrub Suit Reusable

Specification:

- Elastic waistband and all around drawstring Pant.
- Two side pocket in pant and three pocket in shirt.
- Reversible V-neck shirt
- Reinforced neck facing
- Half sleeves
- Color: Blue & Green
- Size: XS, S, M, L, XL & XXL



85027 - Surgeon Gown, Cotton Reusable

Specification:

- Premium Quality Surgeons Gown Set (1 Gown + 1 Face Mask + 1 Cap), Standard size
- Surgical Gowns are designed to provide the right balance of comfort and protection for the widest range of procedures.
- Made from high quality durable cotton fabric
- Finest quality Surgeon Gown have sturdy double-stitched seams. Sleeves with stockinette cuffs.
- Full back Cover and Front Pocket



Hospital Scrubs & Linens

85029- Delivery Gown

Spe cification:

- Labor & Delivery Maternity Hospital Gown
 - Excellent stretch fabric makes this dress perfect wear during pregnancy, labour and post pregnancy and allows comfortable fit.
 - Easy Access for medical examinations and breastfeeding.
 - Machine Washable. Sizing based on pre pregnancy size.
-

Disposable Gown, Non Woven

Spe cification:

- Disposable
- Made from Non Woven material

Item Code	Type
85000	Surgeon Gown
85001	Nurse Gown



85002 - Disposable Scrub Suit, Non Woven

Spe cification:

- Disposable
- Made from NonWoven material



Hospital Scrubs & Linens

85003 - Disposable Cover All, Non Woven

Specification:

- Disposable, Standard size
- Made from Non Woven material



Disposable Surgeon & Nurse Cap, Non -Woven

Specification:

- Disposable
- Made from Non Woven material



Item Code	Type
85004	Surgeon Cap
85005	Nurse Cap

Face Mask, Non Woven

Specification:

- Made from non woven.
- Disposable, Non - sterile
- Ready for use

Item Code	Type
85006	2 Ply
85007	3 Ply



Hospital Scrubs & Linens

Apron

Item Code	Type
85016	Apron PE (Disposab le)
85017	Apron PVC



85016



85017

85019 - Cotton Drape Sheet

Spe cificat ion :

- Made from Cotton
- Color : Green



85020 - Hospital Bed Sheet with Pillow Cover {Pair}

Spe cificat ion :

- Made from Cotton
- Size approx. : 145 x 225 cm
- Pack contain 2 Bed Sheets and 2 Pillow Cover of same colour
- Color : Light Pink, White, Light Orange, Light Green, Light Blue, Light Brown

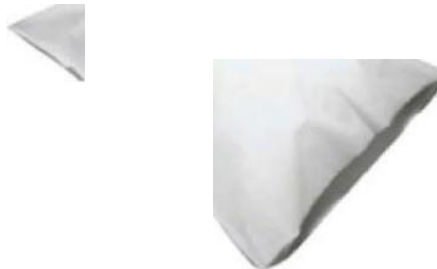


Hospital Scrubs & Linens

85021 - Hospital Pillow Cover

Specification:

- Made from Cotton
- Standard Size



85022 - O.T Towels

Specification:

- Made from Cotton
- Standard Size



Patient Identification Band

Item Code	Type
85023	Adult Size
85024	Child Size



Cold Chain Equipments



Products Inside

- Vaccine Carrier Box
- Cold Box
- Ice Pack

Cold Chain Equipments

Vaccine Carrier Box



Type	90000 Small Vaccine Carrier	90001 Large Vaccine Carrier	90002 Large Vaccine Carrier
Vaccine Storage Capacity	0.80 Ltrs.	1.6 Ltrs.	2.40 Ltrs.
Weight Fully Loaded	2.4 Kgs.	4.2 Kgs.	6.36 kg
Weight Empty (with empty ice pack)	1.4 Kgs.	2.2 Kgs.	2.98 kg
External Surface Material	HOPE (High Density Polyethylene)		
Internal Lining Material	HIPS (High Impact Polystyrene)		
Insulation Material	CFC free Polyurethane		
Insulation Thickness	32136mm	35140mm	32135mm
External Dimensions (L x W x H)	25 x 18 x 21 cms	25 x 25 x 30 cms	27x 27x 32 cm
Internal dimensions (L x W x H)	17 x 10 x 12 cms	16.5 x 16.5 x 22 cms	12.2 x 12.2 x 19cm
Vaccine Storage Dimensions	17 x 10 x 5.3 cms	10 x 10 x 16 cms	11.38 x 11.38 x 19cm
Lid type & Fixings	Removable		
Number of Ice packs Required & Supplied	2	4	4
Ice-packs type	ES/IP.2	ES/IP.2	EOS/IP.1
Volume of Icepack	0.40 Ltrs.	0.40 Ltrs.	0.60 Ltrs.
Conforming to WHO Specifications	E4NC.1	E4NC.2	E4NC.2
Actual Cold Life without opening 43 degC ± 1 degC	19 Hours 25 minutes	40 Hours 19 minutes	50 hours 12 minutes

Instructions for use: Transport of vaccine by vehicles to large immunization sessions lasting more than a week.
Delivery of vaccine to intermediate vaccine stores when the journey is long.

Cold Chain Equipments

Cold Box

- 90003 - Large Cold Box Long Range, Capacity 23.3 Litres
- 90004 - Large Cold Box Long Range, Capacity 22 Litres
- 90005 - Large Cold Box Long Range, Capacity 23 Litres
- 90006 - Small Cold Box Long Range, Capacity 6 Litres
- 90007 - Small Cold Box Short Range, Capacity 15 Litres
- 90008 - Large Cold Box Short Range, Capacity 16 Litres



Type	90003	90004	90005	90006	90007	90008
Vaccine Storage Capacity	23.3 Ltrs.	22.0 Ltrs.	23.0 Ltrs.	6.0 Ltrs.	15.0 Ltrs.	16.0 Ltrs.
Weight Fully Loaded	47.5 Kgs.	49.5 Kgs.	47 Kgs.	26.6 Kgs.	33.2 Kgs.	36 Kgs.
Weight Empty (with empty ice pack)	22.2 Kgs.	21.9 Kgs.	22 Kgs.	14.21 Kgs.	14.5 Kgs.	14.8 Kgs.
External Surface Material	LLDPE(Linear Low Density Polyethylene)					
Internal Lining Material	LLDPE(Linear Low Density Polyethylene)					
Insulation Material	CFC free Polyurethane					
Insulation Thickness	100 mm	100 mm	100mm	100mm	65mm	65mm
External Dimensions (LXWxH)	77 X 62 X 52 ems	77 X 62 X 52 ems	77 X 62 X 52 ems	63 X 51 X 45 ems	65 x 65 x 37 ems	65 X 65 X 37 ems
Internal dimensions (L X W XH)	52 X 37 X 28 ems	52 X 37 X 28 ems	52 X 37 X 28 ems	40 X 28 x 20.6 ems	48 x 48 X 19 ems	48x48x19 ems
vaccine Storage Dimensions	45 X 30 X 18 ems	45 X 30 X 17 ems	45 X 30 x 18 ems	33 x 21 x 10 ems	40 X 40 x 10 ems	40 X 40 X 11 ems
Lid type & Fixings	Hinged	Hinged	Hinged	Hinged	Hinged	Hinged
Number of Ice packs Required & Supplied	50	31	44	26	32	24
Ice-packs type	ES/IP.2	ES/IP.1	ES/IP.2	E5/IP_2	E5/ IP.2	ES/IP.1
Volume of Icepack	0.30 Ltrs.	0.60 Ltrs.	0.40 Ltrs.	0.40 Ltrs.	0.40 Ltrs.	0.60 Ltrs.
Conforming to WHO Specifications	E4/CB.2	E4/CB.2	E4/CB.2	E4/CB.1	E4/CB.4	E4/CB.3
Actual Cold Life without opening 43 deg C ± 1 deg C	141 Hours 12 minutes	173 Hours 56 Minutes	144 Hours	134 Hours	67 Hours 56 minutes	82 Hours 45 minutes

Instructions for use: Transport of vaccine by vehicles to large immunization sessions lasting more than a week.
Delivery of vaccine to intermediate vaccine stores when the journey is long.

Cold Chain Equipments

Ice Pack



Item Code	90009	90010	90011
Capacity	0.3 Ltrs.	0.4 Ltrs.	0.6 Ltrs.
Volume of Ice per pack	0.305 Ltrs.	0.355 Ltrs.	0.570 Ltrs.
External dimension (Approx.)	163 x 91 x 33 mm	165 x 96 x 33 mm	191 x 122 x 35 mm
Weight empty	75 gms.	76 gms.	110 gms.
Weight filled	380 gms.	430 gms.	680 gms.
Material	HOPE (High Density Polyethylene)		
Conforming to WHO/UNICEF Specifications	ES IP.2	E5 IP.2	ESIP.1